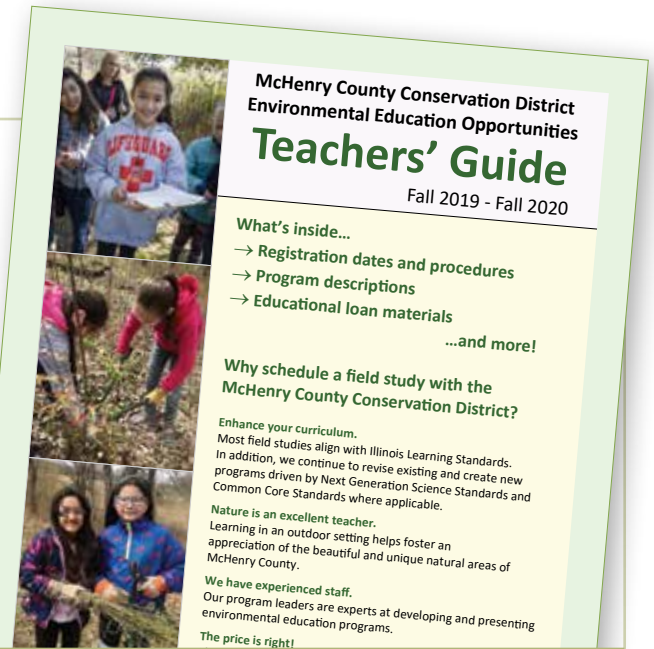


Attention Teachers!

FREE Field Studies & Outreach Programs

Did you know that the Conservation District offers a wide variety of **field studies** on our sites and **outreach programs for your classroom** free of charge? You can find descriptions of these in our annual **Environmental Education Opportunities Teachers' Guide**. Download a copy at MCCDistrict.org under About > Publications or have one mailed or e-mailed to you by sending your contact information to Education@mccd.org.

Interested in the **Fall** field studies and outreach programs? Mark your calendars for **May 13, 2020**. We begin taking and scheduling requests at 8:00 a.m. Be sure to call the number listed with the program you'd like to book.



Great Resource!

Wonders of the Wild Educational Video Series

Follow the explorations of Education Program Coordinator, Kim Compton as she shares fun facts and findings about various aspects of nature in short 3–4 minute videos. This classroom resource can be found on our YouTube Channel >> [youtube.com/DiscoverMCCD](https://www.youtube.com/DiscoverMCCD). You can also catch up with us on Facebook #wondersofthewild #DiscoverMCCD.



Education Program Registration Procedures

Choose one of the following convenient ways to complete your registration.

If you are registering by mail or drop off, make sure you sign the participant waiver at the bottom of the registration form, download at MCCD.me/RegistrationForm. Copies of the form are acceptable as long as they are legible. Payment must accompany your registration. We accept checks payable to *McHenry County Conservation District* and cash. Payment by credit card is accepted via online registration only.



Online:

MCCDistrict.org



Fax (no fee programs only):

(815) 479-5766



Phone:

(815) 479-5779



Mail:

Attn: Program Registration
Prairieview Education Center
2112 Behan Road
Crystal Lake, IL 60014



Drop off locations/hours:

Prairieview Education Center
2112 Behan Road, Crystal Lake
Mon.–Fri.: 9 a.m.–5 p.m.
Sat.: 12:30–4:30 p.m., **Sun.:** Closed

Lost Valley Visitor Center
Route 31 & Harts Rd., Ringwood
Nov.–Mar.: Daily 9 a.m.–4 p.m.
Apr.–Oct.: Daily 9 a.m.–5:30 p.m.

Registration Dates

Registration is processed first come, first served. Beginning on the following dates:

	Residents	Non-residents
Spring	Feb. 10	Feb. 20
Summer Camps:	Feb. 10	Feb. 20
Summer:	May 10	May 20
Fall:	Aug. 10	Aug. 20
Winter:	Nov. 10	Nov. 20

Confirmation You will receive a confirmation by email and/or mail to verify your space in the program.

Register Early Classes are typically canceled if they do not meet their minimums one week ahead of time.

≧ **Tip** ≦ Sign up for multiple people/programs at once to incur only one \$2.00 transaction fee. (Fee programs only).

Withdrawal/Cancellation If you need to withdraw from a class, please contact Prairieview Education Center at (815) 479-5779 or email education@mccd.org as soon as possible. This information is needed for a number of reasons and also allows registrants on the waiting lists to be contacted. Unless otherwise noted, advance notice of five business days (ten in the case of summer camps) is required to receive a refund. Cancellations may occur if there are an insufficient number of people signed up or if severe weather is forecast.